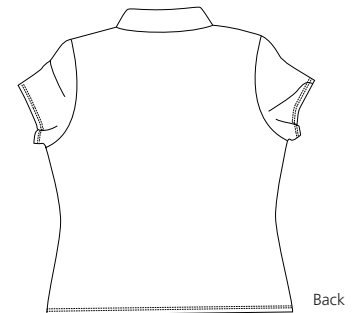
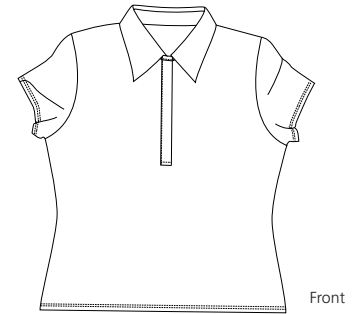




# RED HOUSE

THE WINE COUNTRY LIFESTYLE



## LADIES HONEYCOMB PERFORMANCE PIQUE POLO RH02

Our easy care cotton blend with moisture wicking performance is ideal for an active lifestyle.

- 70/30 cotton/poly, 5.9 oz
  - Self-fabric collar
  - Long, slim 5-button placket
  - Red House engraved buttons and embroidery on lower right sleeve
- Red House engraved buttons and embroidery on lower right sleeve



**Care Instructions:**  
Machine wash cold, inside out.  
Lay flat to dry.

Finished Measurements in Inches								
Size	XS	S	M	L	XL	XXL	Plus 1X	Plus 2X
Chest	17	18	19	20	21.5	23	25.5	28.5
Body	22	22.75	23.5	24.25	25	25.75	28	29
Sleeve	6.25	6.5	6.75	7	7.25	7.5	8.5	9.5
Shoulder	15	15.5	16	16.5	17.25	18	20.25	22.25
Sweep	18	19	20	21	22.5	24	26.5	29.5

Chest measured 1" under arm hole. Body length measured from center back neck seam to hem.  
Sleeve measured from shoulder seam to hem. Shoulder width measured from arm hole to arm hole.  
Sweep measured side seam to side seam.

Colors	
	Bermuda Purple
	Black
	Everglades
	Insignia Blue
	Ruby
	Snorkel Blue
	White
	Yellow

**Please Note:** Colors shown are approximate and for reference only. For closest match see PMS colors, or for exact match, returnable samples and grommeted samples are available.

Color Chart								
Colors	Bermuda Purple	Black	Everglades	Insignia Blue	Ruby	Snorkel Blue	White	Yellow
General PMS	5115C	419C	349C	No Match	201C	294C	No Match	7403C
Textile PMS	19-2514TC	19-0509TC	18-1624TC	19-4014TC	19-1656TC	19-4035TC	11-0601TC	18-0827TC
Madeira Classic	1386	1199	1051	1364	1184	1042	1005	1349

Red House Embroidery Recommendations <i>Provided by the Embroidery Trade Association</i>	
RH01/RH02 – Honeycomb Performance Pique Polo & Ladies Honeycomb Performance Pique Polo	<i>This information is intended to serve as a guideline for embroiderers. SanMar is not responsible for the compromised integrity of Red House fabrics due to embroidery or decoration.</i>
Backing – 3 oz cut-away or tear-away Thread: 40 weight Soluble topping recommended. Needle: Ball point Notes: This garment will work well with most designs, but take care not to stretch the fabric when hooping.	